

1 NOSSAMAN LLP
2 FREDERIC A. FUDACZ (SBN 50546)
3 ffudacz@nossaman.com
4 ALFRED E. SMITH, II (SBN 186257)
5 asmith@nossaman.com
6 777 S. Figueroa Street, 34th Floor
7 Los Angeles, CA 90017
8 Telephone: 213.612.7800
9 Facsimile: 213.612.7801

**EXEMPT FROM FILING FEES
GOVERNMENT CODE § 6103**

Attorneys for Main San Gabriel Basin Watermaster

SUPERIOR COURT OF THE STATE OF CALIFORNIA
FOR THE COUNTY OF LOS ANGELES

UPPER SAN GABRIEL VALLEY
MUNICIPAL WATER DISTRICT

Plaintiff,

vs.

CITY OF ALHAMBRA, ET AL.

Defendant.

Case No: C924 128

Assigned for All Purposes to:
Honorable Maureen Duffy-Lewis
Dept. 38

**NOTICE OF STATUS CONFERENCE
PRESENTATION RE: MAIN SAN
GABRIEL BASIN OVERVIEW**

Hearing

**Date: September 15, 2022
Time: 9:30 a.m.
Dept.: Dept. 38**

1 TO ALL PARTIES AND THEIR ATTORNEYS OF RECORD:

2 PLEASE TAKE NOTICE that on September 15, 2022, at 9:30 a.m., or as soon
3 thereafter as counsel may be heard, in Department 38 of the above-entitled Court,
4 located at 111 North Hill Street, Los Angeles, California, a status conference
5 regarding overview in the Main San Gabriel Groundwater Basin will be conducted in
6 the above-referenced matter before the Honorable Maureen Duffy-Lewis, Judge
7 Presiding and Specially Assigned. A copy of the power point presentation for set
8 status conference is attached hereto as Exhibit A.

9 Remote appearances via audio or video through LACourtConnect are
10 available. Please visit the Court's website for more information.

11 For updated Covid-19 Courthouse Protocols, please check the court's website at
12 <https://www.lacourt.org>.

13
14 DATED: August 5, 2022

NOSSAMAN LLP
Frederic A. Fudacz
Alfred E. Smith

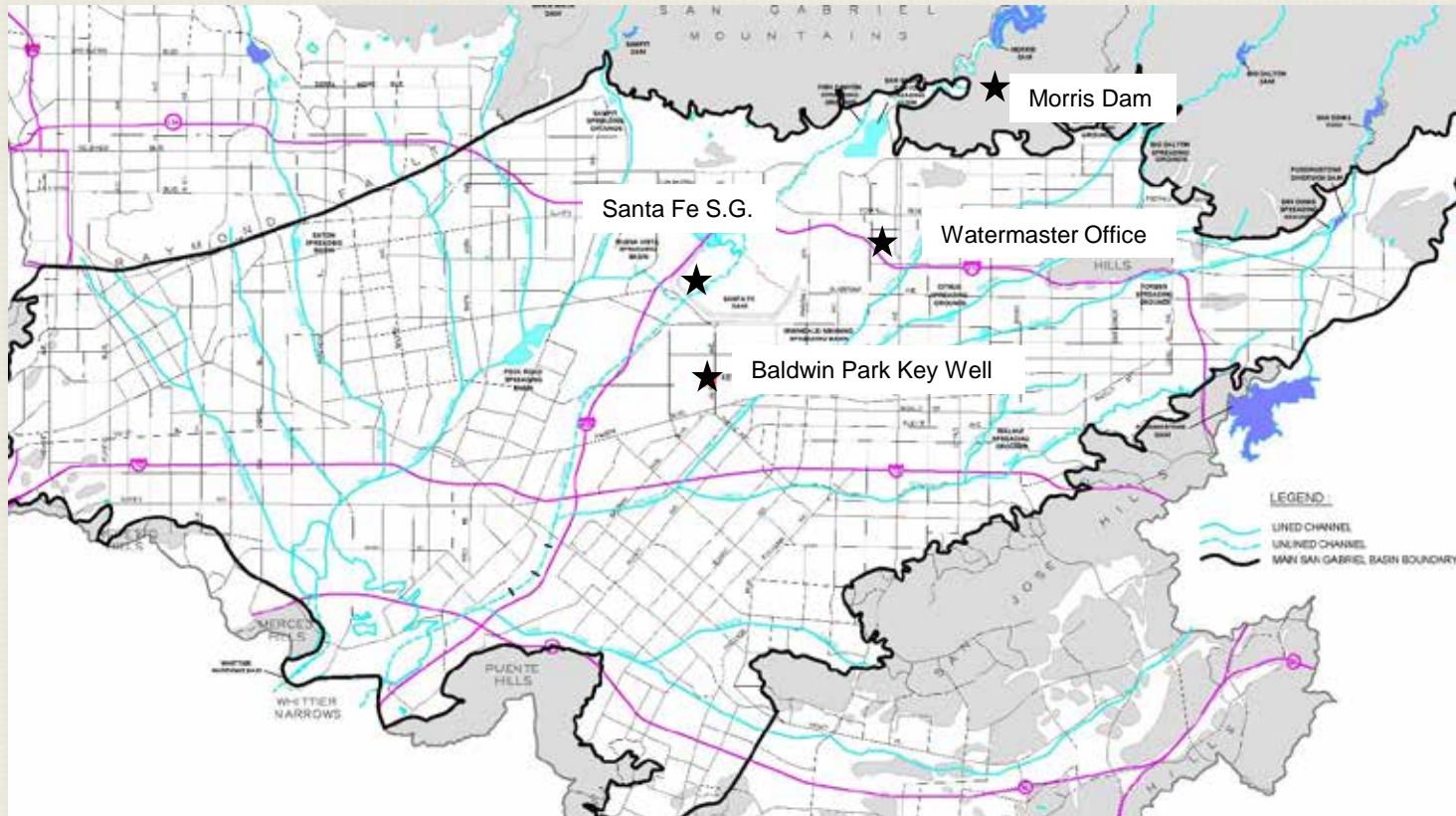
15
16
17 By: 

18 Frederic A. Fudacz
19 Attorneys for Main San Gabriel Basin Watermaster
20
21
22
23
24
25
26
27
28

EXHIBIT A

STATUS CONFERENCE WITH THE HONORABLE MAUREEN DUFFY-LEWIS

*UPPER SAN GABRIEL VALLEY MUNICIPAL WATER DISTRICT VS. CITY OF ALHAMBRA, ET AL,
CASE NO. 924128, LOS ANGELES COUNTY, AS AMENDED JUNE 21, 2012*



Presented: September 15, 2022

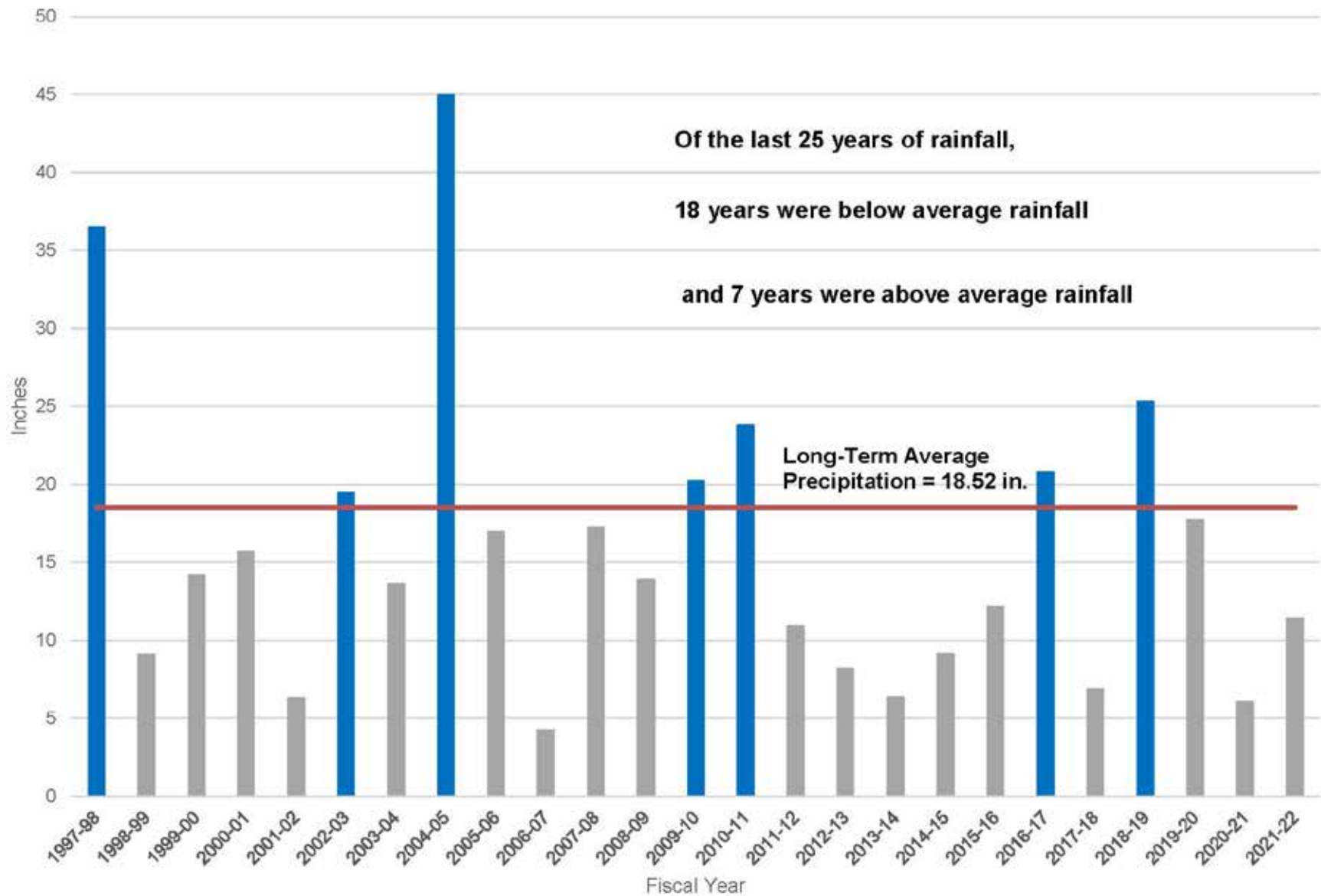
MAIN SAN GABRIEL BASIN OVERVIEW

- Groundwater Basin Management
- Impacts of FY 2021-22 Rainfall
- Actions to Address Long-term Drought
- Basin Outreach and Education

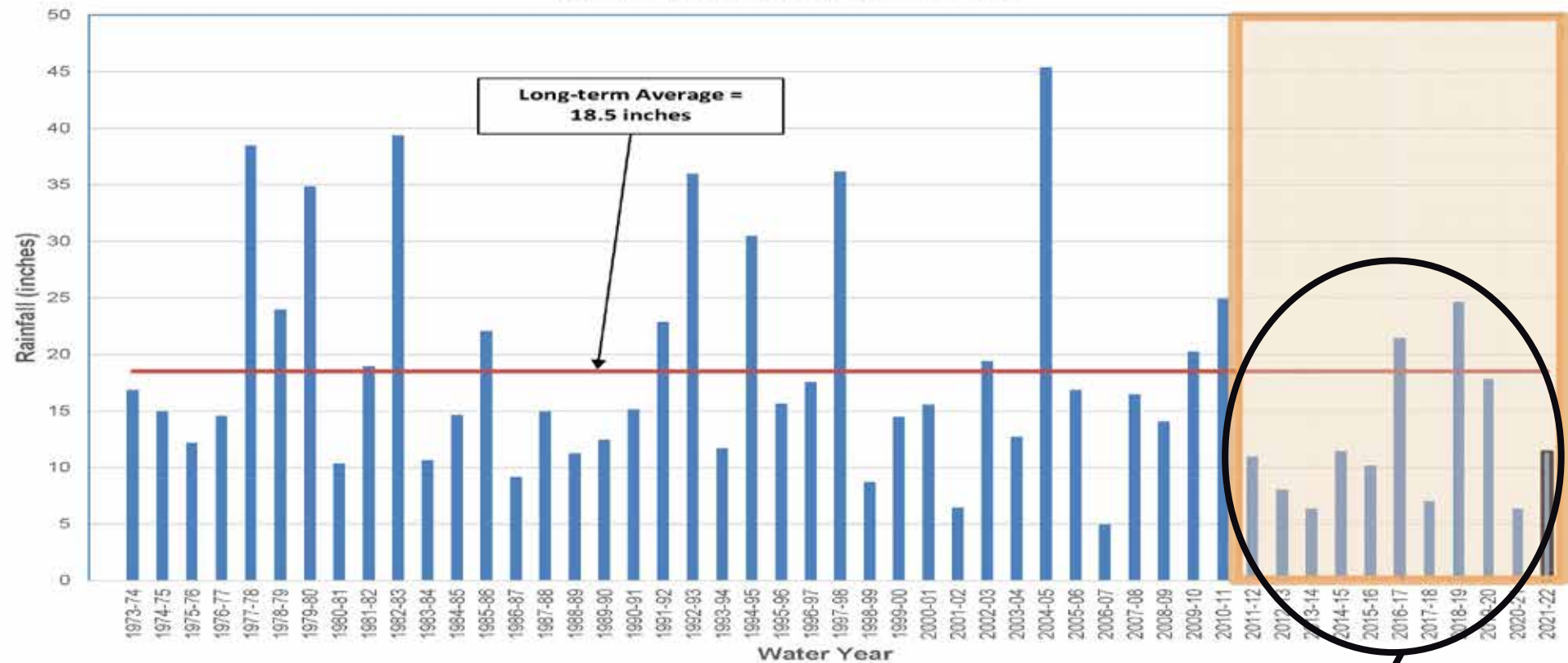
GROUNDWATER BASIN MANAGEMENT

- Maintained active and effective engagement with Producers and Public throughout pandemic.
- 18 of the last 25 years produced below average rainfall
- Drought Impacts Last 10 Years (fiscal years 2011-12 through 2021-22)
 - Rainfall averaged about 12.3 inches; long-term average is 18.5 inches
 - Local replenishment totaled about 543,000 AF; deficit of about 557,000 AF (over 10 years) and represents about 70 feet in elevation at the Key Well
 - Key Well level (excluding impact of Cyclic Storage water) about 37 feet below lower end of Judgment operating range of 200-250 feet amsl
 - Established Operating Safe Yield of 150,000 AF since fiscal year 2014-15 (last 8 years)
 - Long-term Average Operating Safe Yield over 190,000 AF

Historical Rainfall Data

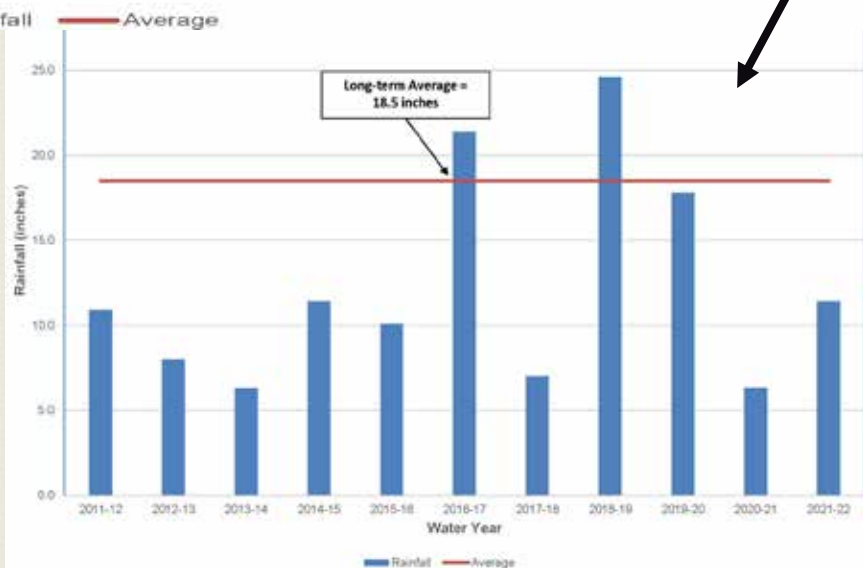


Rainfall in San Gabriel Valley

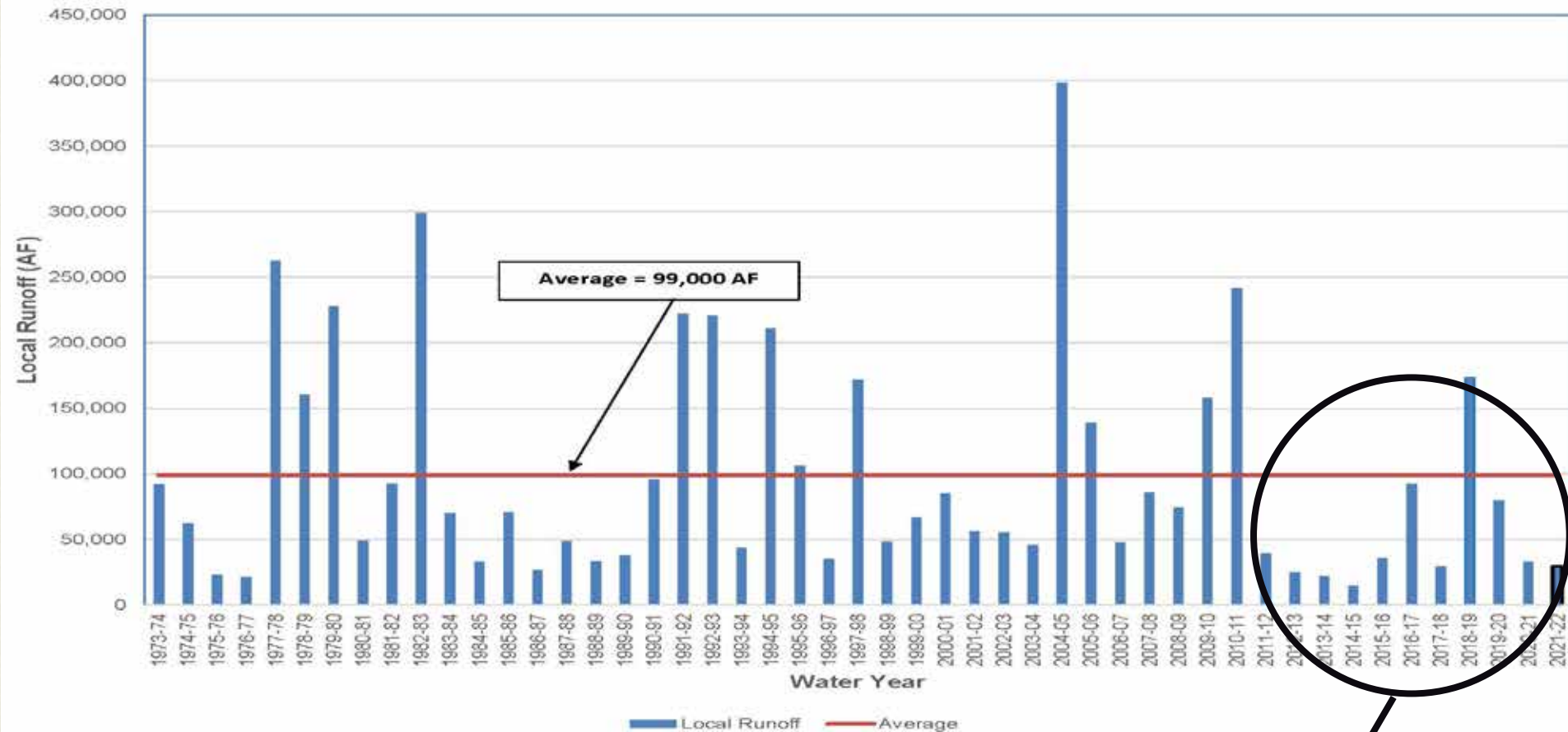


- Long-term Average Annual Rainfall = 18.5 in/yr
- Multi-year Drought Average Rainfall = 12.3" (66% of Average)
- Fiscal Year 2021-22: 11.4" (62% of Average)

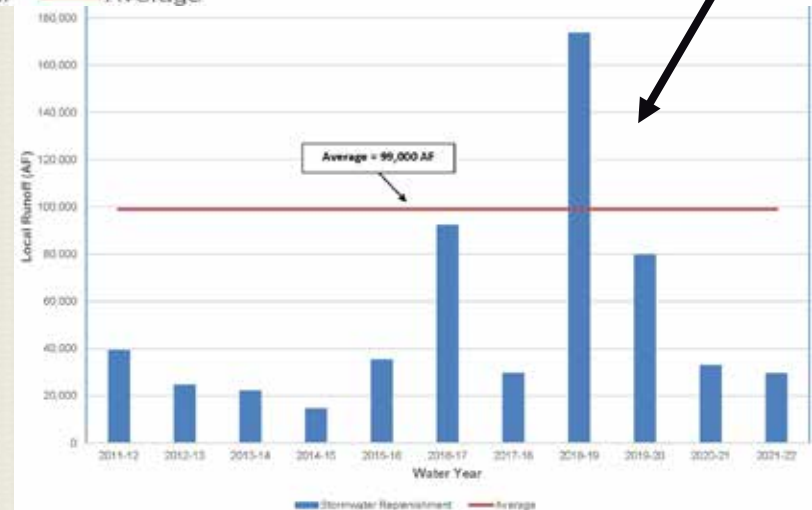
Status Conference on Main San Gabriel Basin Management



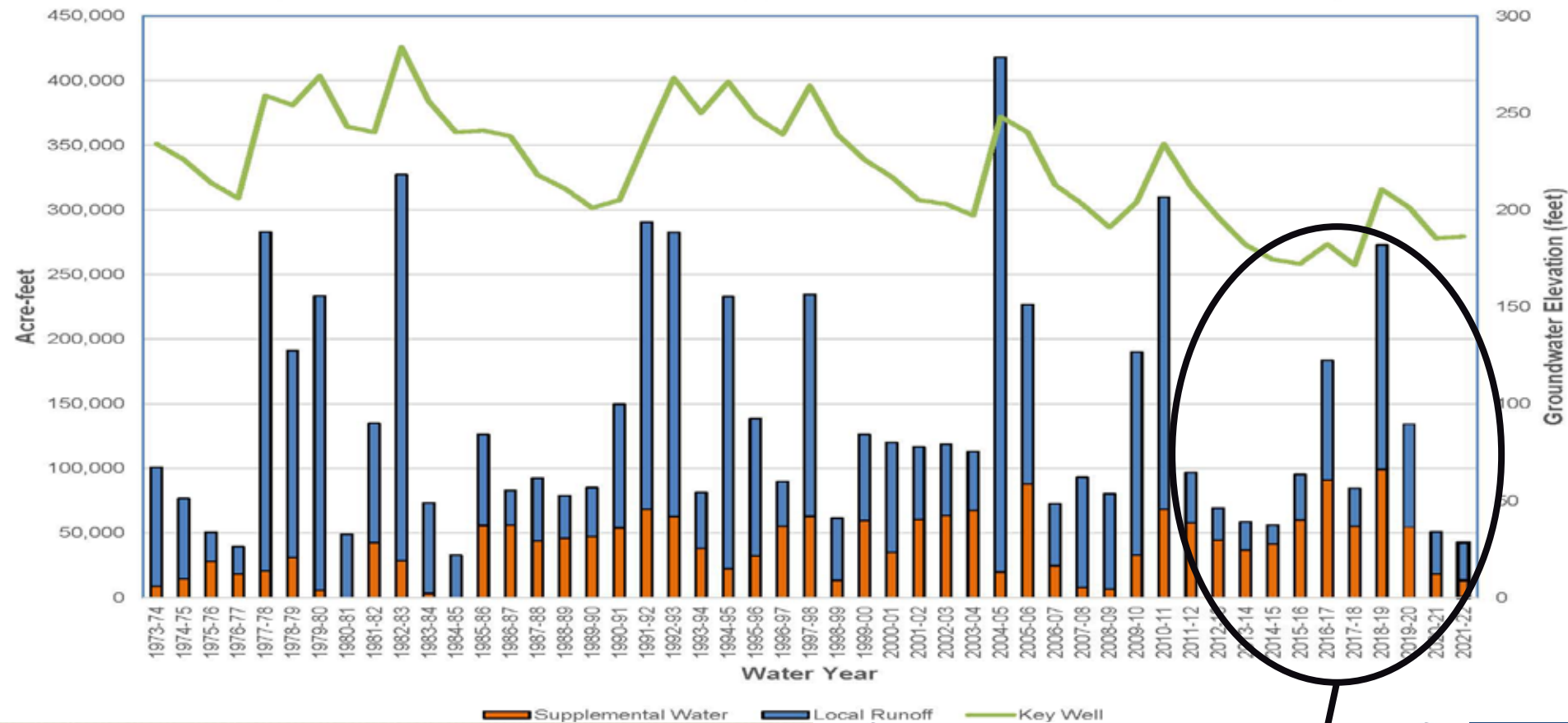
Annual Local Runoff in San Gabriel Valley



- Long-term Annual Average = 99,000 AFY
- Multi-Year Drought Average = 52,000 AF
(53% of Average)
- Fiscal Year 2021-22: 29,300 AF
(through March 31, 2022) (29% of Average)

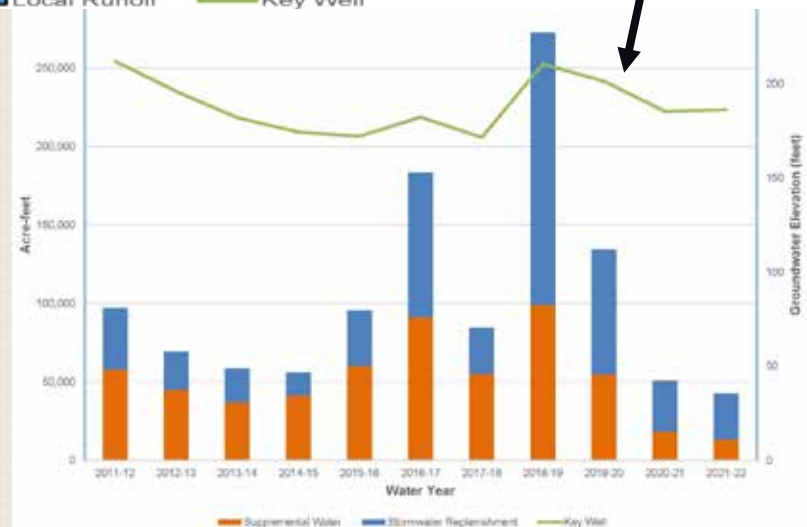


Key Well vs. Local Runoff vs. Supplemental Water in San Gabriel Valley

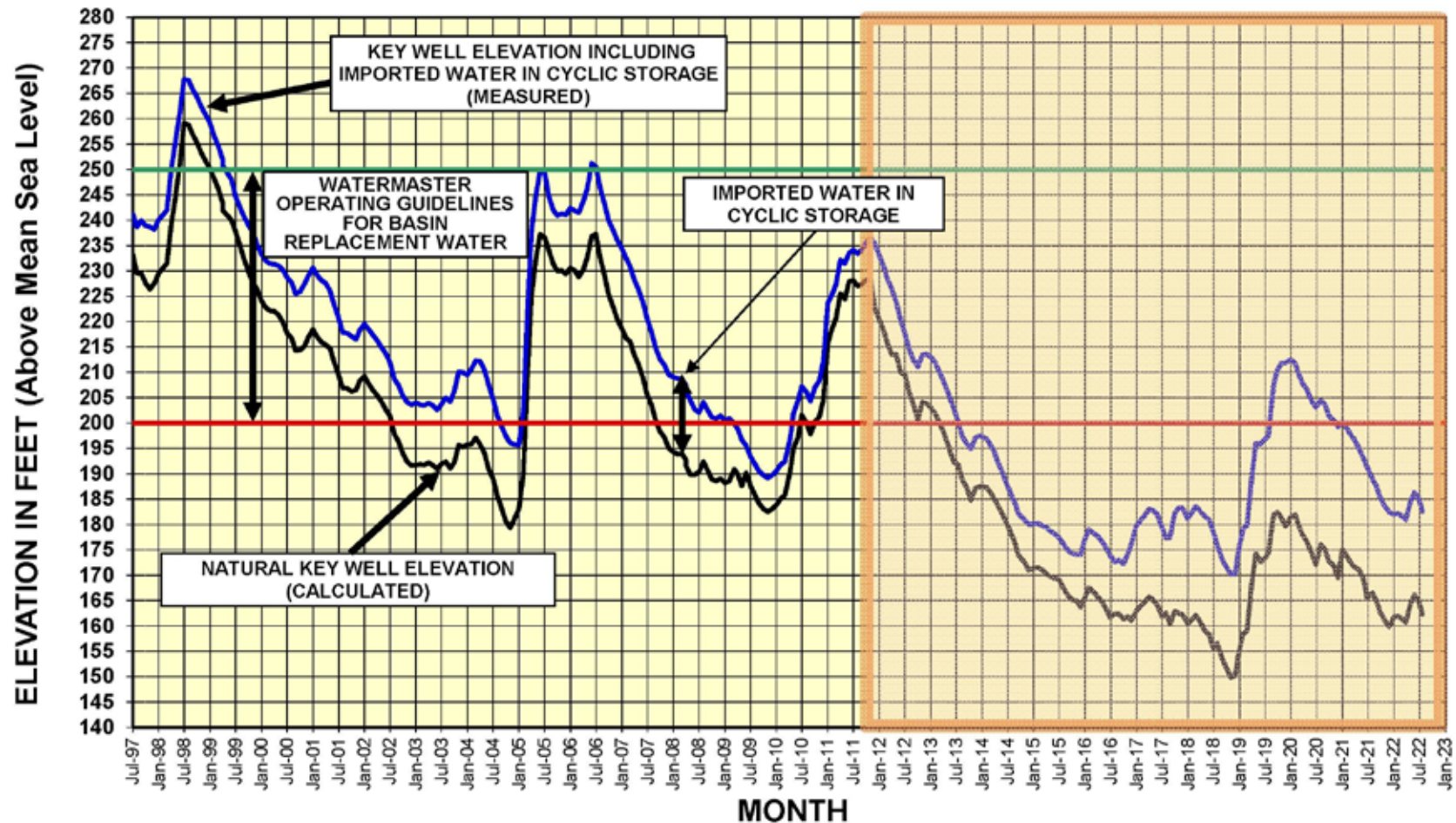


Supplemental Water Deliveries

- Long-term Average = 40,200 AF Annually
- Deliveries during FY 2021-22 = 13,400 AF (through March 31, 2022)
- Stabilize Key Well elevation



GROUNDWATER BASIN MANAGEMENT



DROUGHT PLANNING

RDA

- Maintain Basin water levels
- Stormwater augmentation
- Flexibility with Operating Safe Yield
- Currently \$175 per AF on all production
- Deliver water when available for use when it is dry

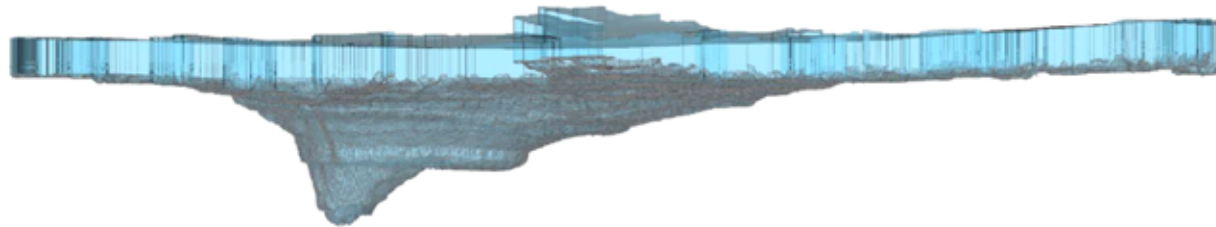
MWD's "PURE WATER SOUTHERN CALIFORNIA"

- Enhanced Modeling Capabilities
- Stormwater augmentation
- Long-term Sustainable Supply

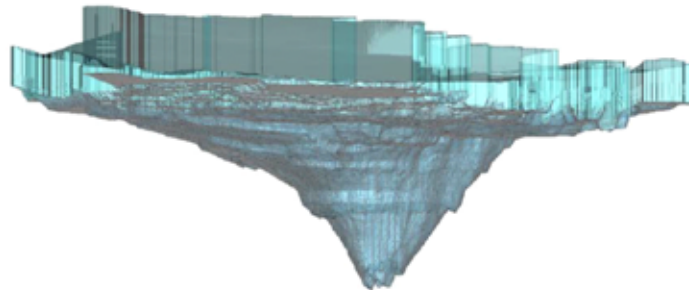
DROUGHT PLANNING cont'd

3-D Basin Model Grid System

3D Basin Model Grid East to West Cross Section



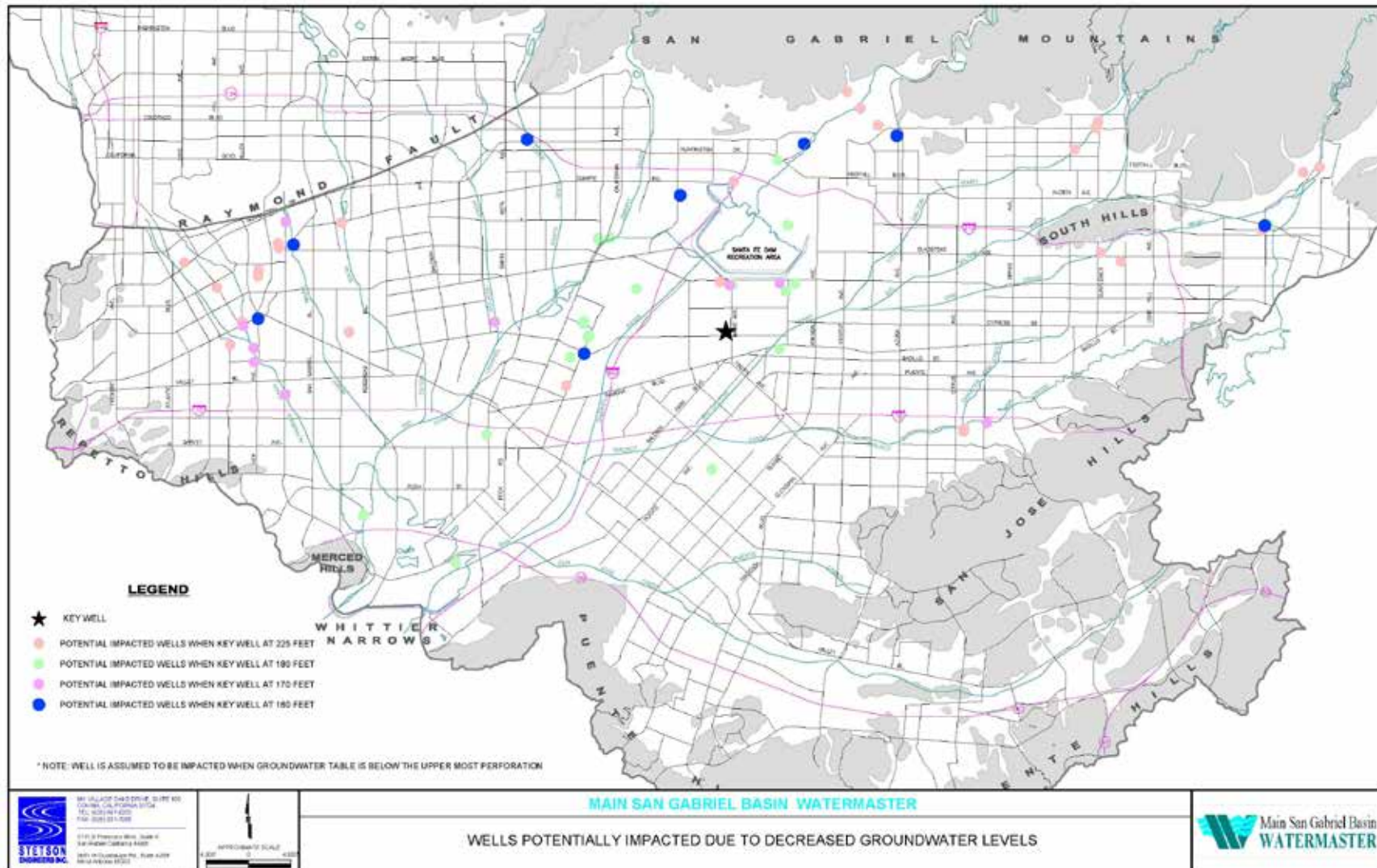
3D Basin Model Grid South to North Cross Section



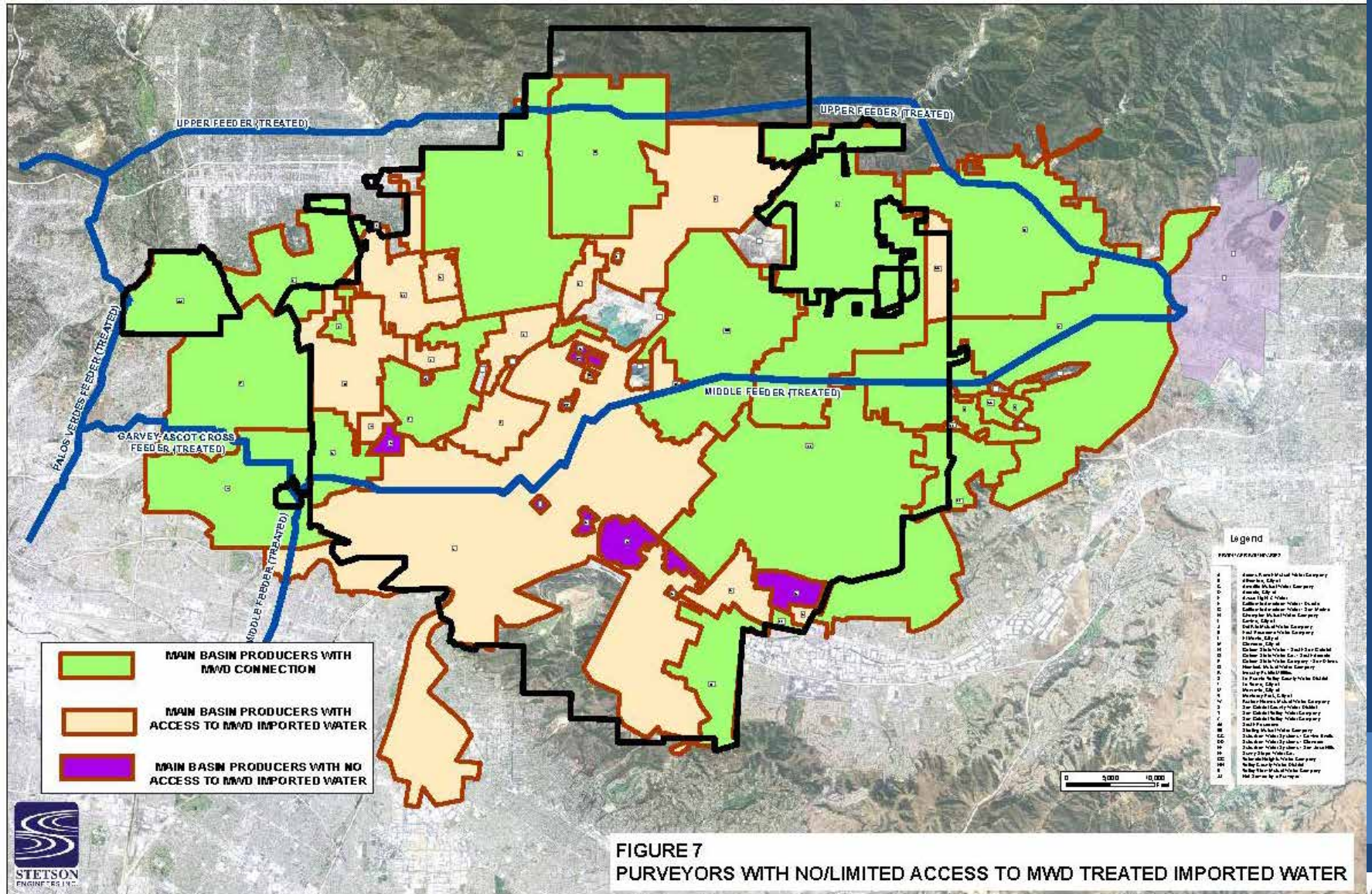
Main San Gabriel Basin Watermaster

3-D Model Grid System

DROUGHT PLANNING cont'd



DROUGHT PLANNING cont'd



ACTIONS TO ADDRESS LONG-TERM DROUGHT

- 2012 Judgment Amendment
 - Established Resource Development Assessment (RDA)
- Stormwater Augmentation Program
 - Use RDA funds to purchase/replenish Supplemental Water for general benefit of Main Basin
 - Initially Proposed ramp up of \$40/AF to \$175/AF over five years

FY 2016-17

Assessment - \$40/AF
Total purchased – 11,400 AF

FY 2017-18

Assessment - \$70/AF
Total purchased – 19,000 AF

FY 2018-19

Assessment - \$105/AF
Total purchased – 24,800 AF

FY 2019-20

Assessment - \$140/AF
Total purchased – 31,400 AF

FY 2020-21

Assessment - \$175/AF
Total purchased – 41,000 AF

FY 2021-22

Assessment - \$175/AF
Est. Total purchased – 31,000 AF

ACTIONS TO ADDRESS LONG-TERM DROUGHT

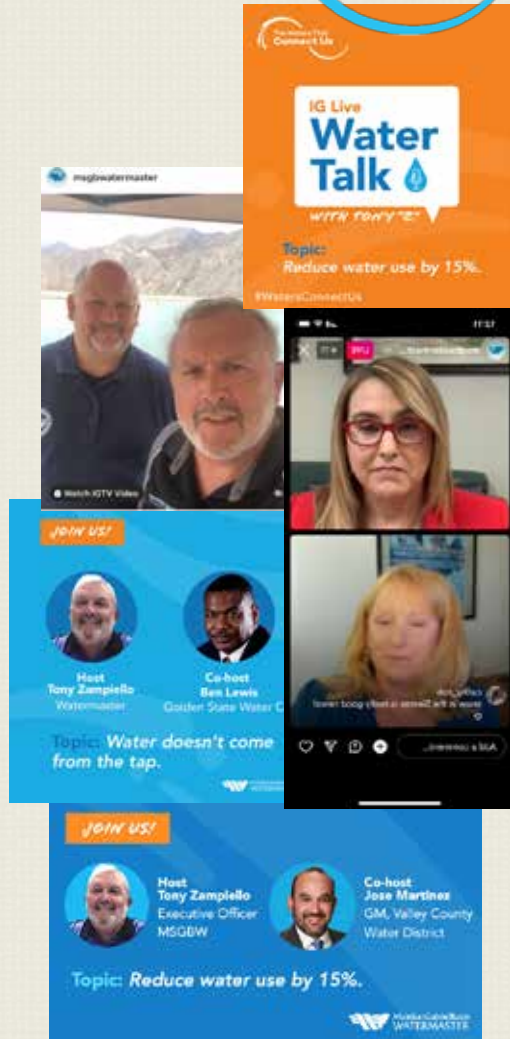
cont'd

- Negotiated Agreement with UD/MWD to deliver imported water when available, store in the Basin, and buy over 5-year term.
 - UD/MWD delivered 58,517.5 AF during fiscal year 2017-18 and 108,209.1 AF during calendar year 2019
 - RDA and Replacement Water assessments fund the purchases
 - Watermaster Board approved Basin Outreach Campaign
- SWP water supply allocation decreased by DWR in 2022
 - MWD set an allocation for SWP dependent member agencies
 - UD's allocation about 14,600 AF for 2022; planned delivery at this fall 2022.
 - Watermaster, MWD and UD are cooperatively developing a Quagga Mussel Control Plan with the goal of delivering Colorado River Water to the Basin as an additional Supplemental Water supply source.

OUTREACH and EDUCATION

- In April of 2019, the Watermaster Board approved an outreach endeavor and in May, 2019 hired Cityworks (Consultant) to assist in educating the public on general concepts such as:
 - What is a groundwater basin;
 - What the Main Basin does;
 - Where it is located;
 - How the Basin is operated and utilized;
 - Who benefits from its waters; and
 - How the Basin is linked to the overall drinking water needs of nearly 2 million San Gabriel Valley residents
- Ad Hoc Committee formed to engage broad Producer input
 - Developed a new website “The Waters That Connect Us”;
 - Engaged Imported Water Suppliers to encourage participation conveying our story;
 - Conducted various surveys and focus groups to gather public perception and understanding of Watermaster and the Basin;
 - Engagement continued through pandemic safer at home orders by developing social media presence.

OUTREACH and EDUCATION cont'd



- Enhanced website to make more visually interesting and link interactive content such as videos and E-blasts.
- Created social media platforms to engage the public on a broader scale.
- Produced and post informational videos for distribution at targeted points throughout the year including May, which is Water Awareness Month.
- Launched Instagram Live events – “Water Talks with Tony Z” featuring discussions on current issues with special guests.
- Participate in presentations to City Councils, Board of Directors, Media and Community Education Events