

1 NOSSAMAN LLP
2 FREDERIC A. FUDACZ (SBN 50546)
3 ffudacz@nossaman.com
4 ALFRED E. SMITH, II (SBN 186257)
5 asmith@nossaman.com
6 777 S. Figueroa Street, 34th Floor
7 Los Angeles, CA 90017
8 Telephone: 213.612.7800
9 Facsimile: 213.612.7801

**EXEMPT FROM FILING FEES
GOVERNMENT CODE § 6103**

Attorneys for Main San Gabriel Basin Watermaster

SUPERIOR COURT OF THE STATE OF CALIFORNIA
FOR THE COUNTY OF LOS ANGELES

UPPER SAN GABRIEL VALLEY
MUNICIPAL WATER DISTRICT

Plaintiff,

vs.

CITY OF ALHAMBRA, ET AL.

Defendant.

Case No: C924128

Assigned for All Purposes to:
Honorable Maureen Duffy-Lewis
Dept. 38

**NOTICE OF PRESENTATION AT
FURTHER STATUS CONFERENCE RE
GOLDEN MUSSEL ISSUE**

Hearing Date Set by Court

**Date: February 5, 2026
Time: 9:30 a.m.
Place: Dept. 38**

1 TO ALL PARTIES AND THEIR ATTORNEYS OF RECORD:

2 PLEASE TAKE NOTICE that on February 5, 2026, at 9:30 a.m., or as soon
3 thereafter as counsel may be heard, in Department 38 of the above-entitled Court,
4 located at 111 North Hill Street, Los Angeles, California a further Status Conference
5 regarding the Golden Mussel Issue will be held.

6 On December 5, 2025 at 10 a.m., a Status Conference was held on Basin
7 Conditions and Operations, Judge Duffy-Lewis presiding. Among the subjects
8 addressed was the impact of the Golden Mussel issue on supplemental water
9 replenishment operations under the Judgment. In a Presentation made by staff of the
10 Main San Gabriel Basin Watermaster (Watermaster), it was noted that Los Angeles
11 County Department of Public Works (County) "ordered the shutdown of imported
12 deliveries" on September 24, 2025, citing the discovery of Golden Mussel Veligers in
13 Silverwood Lake. Watermaster staff also stated that it had requested that the County
14 participate in the presentation to the Court. However, the County chose not to
15 participate.

16 Because the County was not present, and its importance to the Court's
17 understanding of the issue, the Court ordered a further Status Conference be held
18 specifically on the Golden Mussel issue on February 5, 2026 at 9:30 a.m. and
19 ordered that the County be present, by subpoena if necessary.

20 The Court furthered order that Parties wishing to be heard be physically
21 present at Court. Remote appearance via audio or video will not be available.

22 A copy of the power point presentation for said further status conference, to be
23 presented by representatives of the Main San Gabriel Basin Watermaster, is attached
24 hereto as Exhibit A.

1
2
3
4
5
6
7
8
9
10
11
12
13
14
15
16
17
18
19
20
21
22
23
24
25
26
27
28

DATED: January 5, 2026

NOSSAMAN LLP
Frederic A. Fudacz
Alfred E. Smith

By:  _____
Frederic A. Fudacz
Attorneys for Main San Gabriel Basin Watermaster

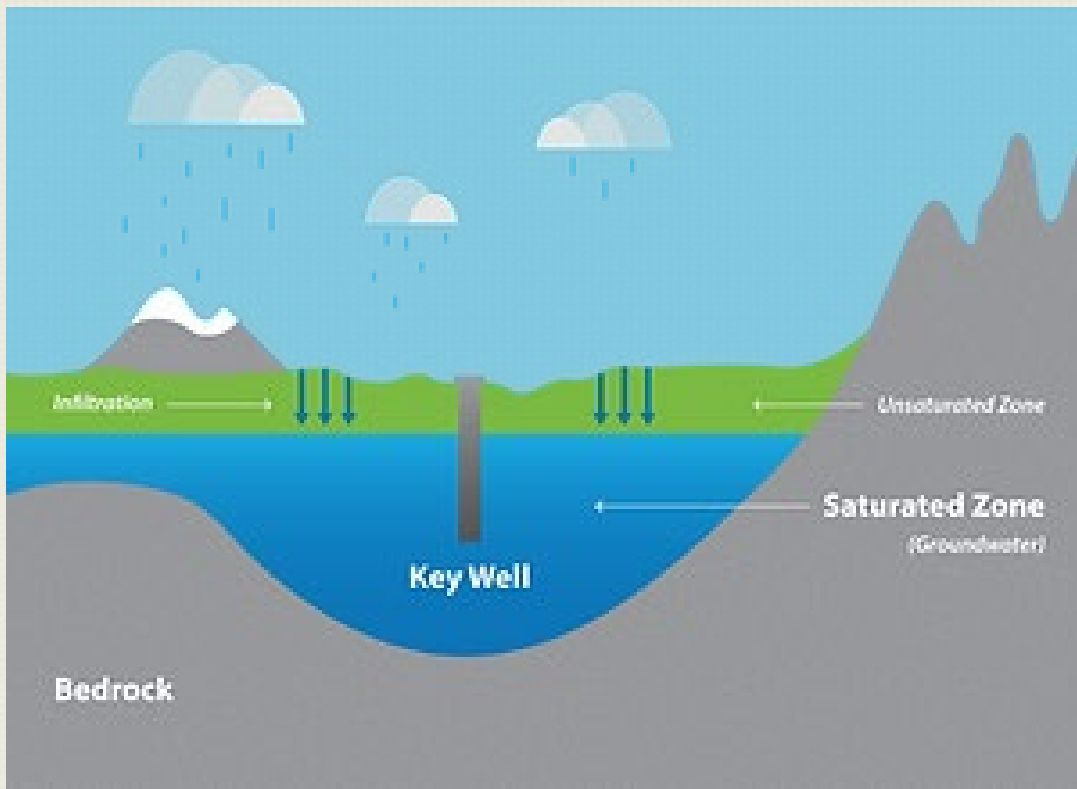
EXHIBIT A

FURTHER STATUS CONFERENCE RE GOLDEN MUSSEL ISSUE

BEFORE

THE HONORABLE MAUREEN DUFFY-LEWIS

*UPPER SAN GABRIEL VALLEY MUNICIPAL WATER DISTRICT VS. CITY OF ALHAMBRA, ET AL,
CASE NO. 924128, LOS ANGELES COUNTY, AS AMENDED JUNE 21, 2012*



Historic High: 295.' on
July 20, 1983

Historic Low: 169.4' on
November 21, 2018

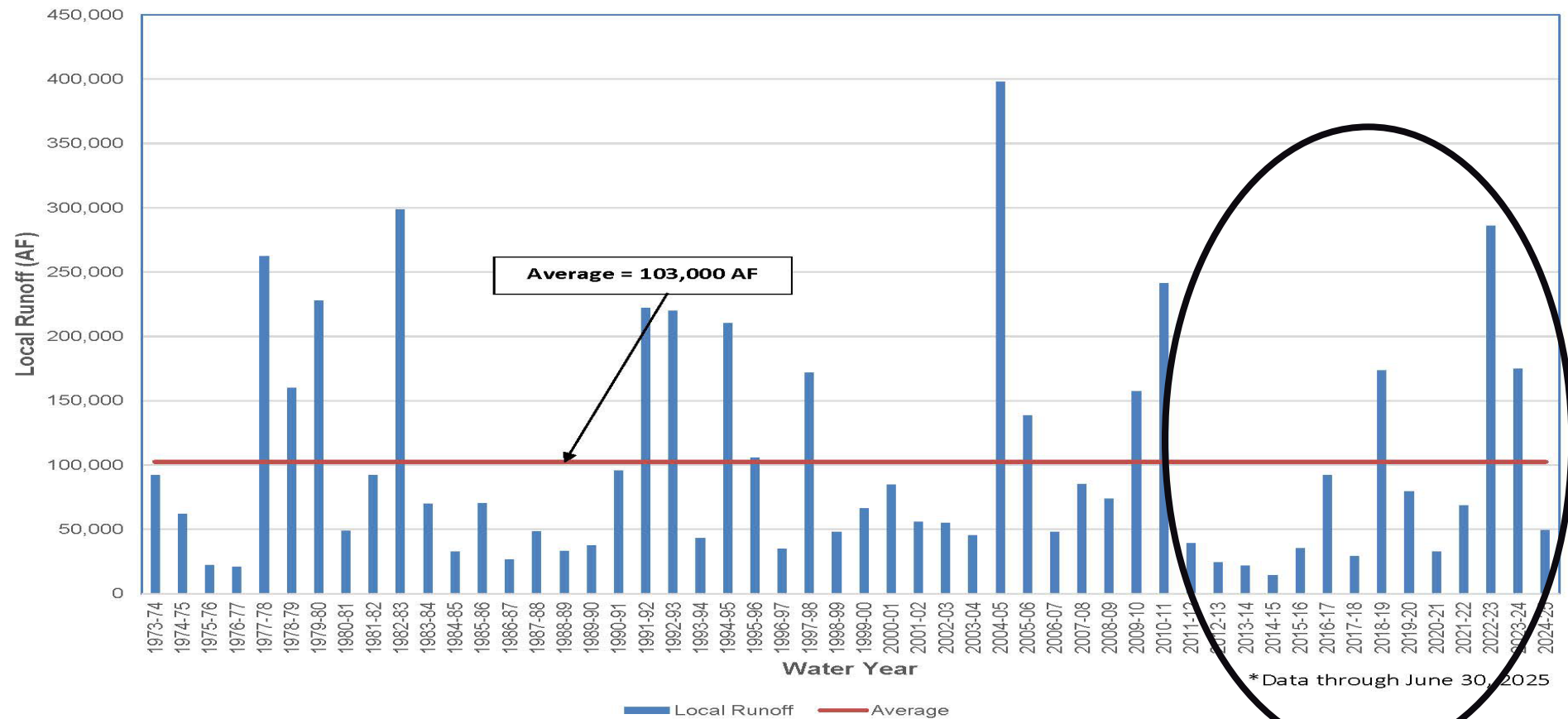
Current: 244.2' on
December 26, 2025

Presented: February 5, 2026

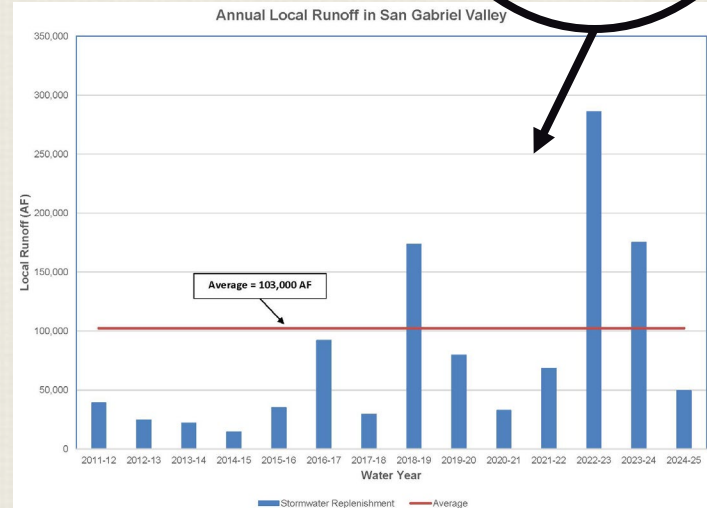
KEY ISSUES

- Challenges to Long-term Water Supply Reliability
- Compliance with Judgement “Physical Solution”
- Golden Mussel Urgency

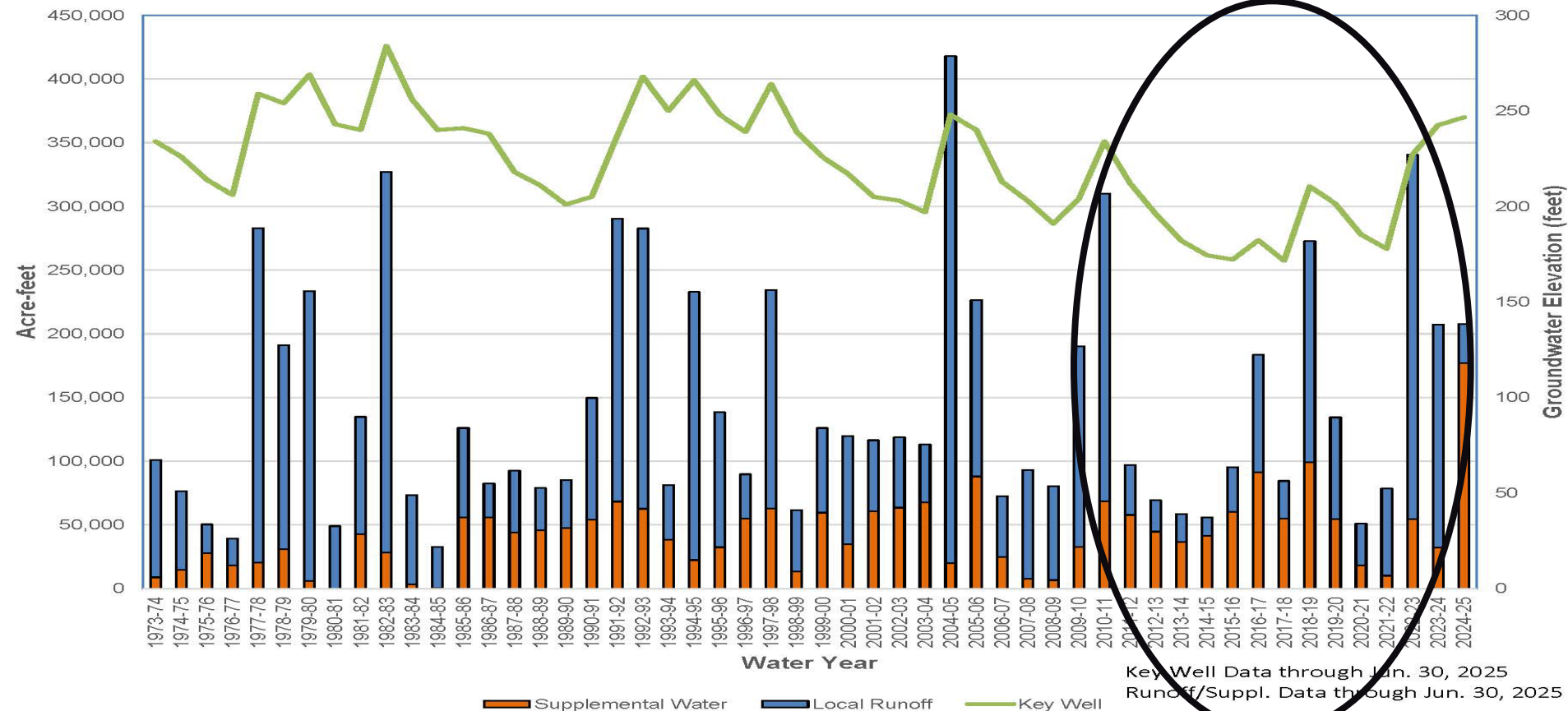
Annual Local Runoff in San Gabriel Valley



- Long-term Annual Average = 103,000 AFY
- Multi-Year Drought Average = 55,000 AF (53% of Average)
- Fiscal Year 2024-25: 49,400 AF (48% of Average)



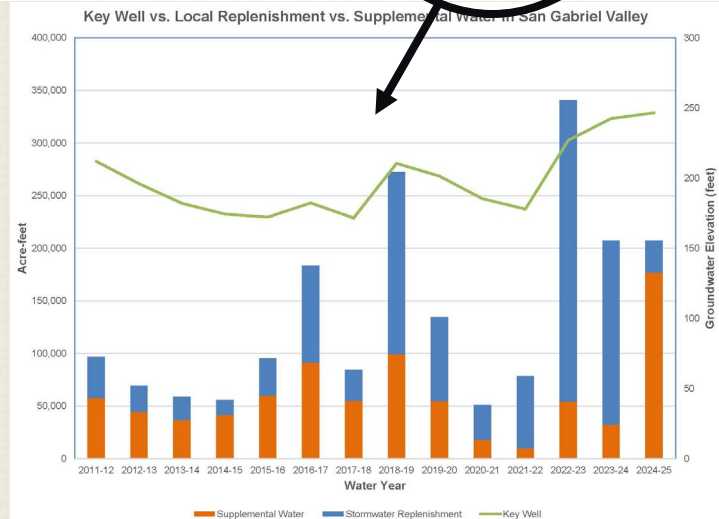
Key Well vs. Local Runoff vs. Supplemental Water in San Gabriel Valley



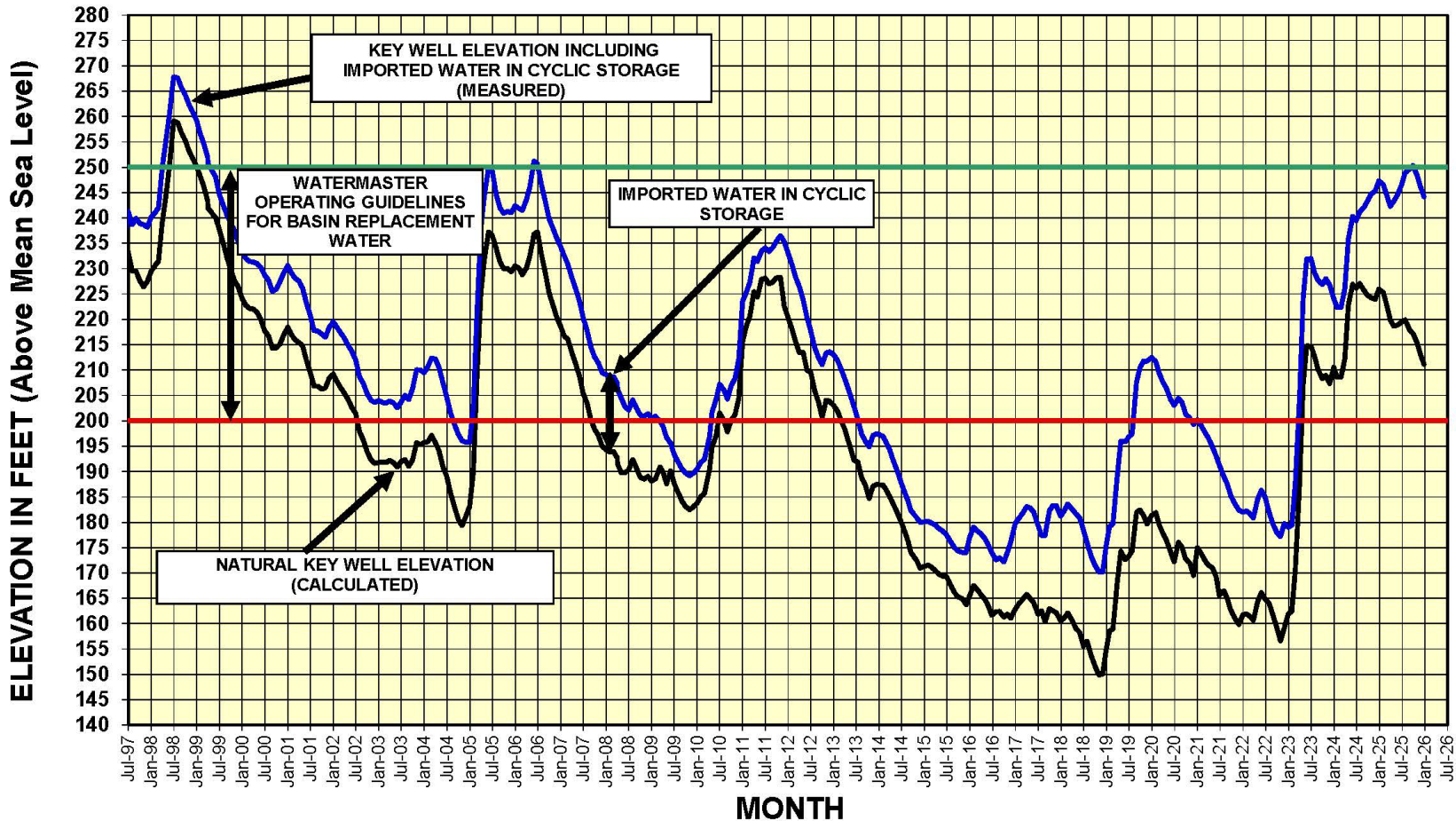
Supplemental Water Deliveries:

- Long-term Average = 42,800 AF
- Deliveries during FY 2023-24 = 176,900 AF through June 30, 2025
- Helped to stabilize Key Well elevation

02/05/2026 Status Conference on Main San Gabriel Basin Management



GROUNDWATER BASIN MANAGEMENT



LONG-TERM RELIABILITY

PHYSICAL SOLUTION DEPENDENT UPON SUPPLEMENTAL WATER:

- IMPLEMENTED RDA FUNDING in 2014 to:
 - Maintain Basin Water Levels
 - Augment Local Stormwater During Dry Years
 - Maximize Flexibility in Setting Operating Safe Yield
 - Deliver Water When Available for Use When it is Not
 - Letter Agreements
- ADVOCATE FOR RELIABLE IMPORTED WATER SUPPLIES
 - Support MWD's "PURE WATER SOUTHERN CALIFORNIA"
 - Attend MWD Board Meetings and provide support comments
 - Long-term Sustainable Supply to the Main Basin and Adjacent Basin's
 - Reduces dependency on State Water Project and Colorado River

CHALLENGES to LONG-TERM RELIABILITY

- Golden Mussel – Invasive Species
 - Initially found in the State Water Project System in October 2024
 - Basin partners began development of Golden Mussel Control Plan
 - (**NOT** required by DWR until 180 days **AFTER** verified presence in water body).
 - Watermaster, RA's – SGVMWD, TVMWD, USGVMWD, Metropolitan Water District
 - Included LA County Public Works in August 2025
 - Judgment based on Physical Solution
 - Requires imported water for replenishment and balance
 - Existing Spreading Agreement with LA County Public Works/FCD
 - Significant risk to Upper Canyon Communities
 - Ability to meet drinking water needs +/- 40% reduction
 - Fire response – for greater Los Angeles County
 - Legislation passed to address State's position – AB 149
 - Amends Sections 2301 & 2302 of the California Fish and Game Code
 - Requires California Department of Fish and Wildlife (CDFW) to implement measures to avoid infestation and control or eradicate any infestation that may occur in a water supply system.
 - Ensures that water agencies operating under an appropriate mussel control plan are protected from regulatory enforcement
 - Focus is on Control and Mitigation
 - DWR "Prevention" is for overland (watercraft) transportation – **NOT** prevent occurrence

CHALLENGES, cont'd

- Partnership Group began discussions with County representatives about the presence of the Golden in the State Water Project in May 2025
 - Group began developing mitigation and management plan targeting connection points throughout the Basin
 - Prioritization of connection points determined
 - Strategy developed to manage each point of connection
- Partnership Group requested meeting with LA County Director of Public Works in July 2025
 - July 2025 County Consultant – Woodard and Curran asked group to provide short presentation on Golden concerns to the LA County Water Plan Regional Reliability Task Force
 - County representatives participated in a meeting on August 14, 2025 assuring Partnership Group that they had no intention of shutting down imported deliveries and would be actively supporting our plan development
 - County Executive Operations representative asked Partnership Group not to meet with the Supervisor's Office, preferring to work collaboratively and present united resolution to Board
 - Regular meetings were held on the plan development with the Partnership Group, including LA County in early September 2025
 - Partnership Group continue working together on Golden Mussel Control Plan to restore flows
 - Upper Canyon communities at significant risk during shutdown – dependent upon replenishment
 - Phase 1 Control Plan for Upper Canyon Basins with 100% “control” presented to County in September, 2025
 - County rejected plan for SWP deliveries to Canyon Basins December 2025.
- **TO DATE - NO OTHER AGENCY TAKING WATER FROM THE STATE WATER PROJECT HAS REFUSED DELIVERIES OR BEEN BANNED FROM ACCESS - INCLUDING REGULATORY AGENCIES (confirmed with Dominique Norton, CDFW & Jennifer Pierre, SWC)**

PRIOR SUCCESSES

- Quagga mussel arrives in Colorado River (CRW) in 2007
 - Plans for limiting connected water body flows and watercraft inspection/restrictions are developed and implemented by MWD and DWR over subsequent years
 - Main Basin deliveries are reliant on SWP
 - Drought Emergency Quagga Mussel Control Plan developed by Upper San Gabriel Valley Municipal Water District (Upper Water) in June 2023 due to extended drought in SWP
 - The plan reinforces the requirement to “take best available quality water” into LA Co Spreading Grounds
 - Options available: CRW and SWP
 - WY 2023-24 produces above-average rainfall & snowpack, State Water Project allocations see increases
 - Increased allocation from SWP allows Main Basin WM to avoid drawing water from the infested CRW
- Municipal water demand in Main Basin was met via an alternative water source and best water quality available, not by pre-treatment/prevention measures or stop orders on imported water deliveries

PLAN COMPONENTS

- **The general approach for preventing, controlling and mitigating golden mussels in the Main Basin is the following:**

- **Prevention and Pretreatment**

- DWR language - *“To prevent these damaging mussels from spreading, DWR routinely monitors for these species and acts to prevent their spread to non-infested waters. DWR partners with agencies such as the California Department of Fish and Wildlife (CDFW) and California State Parks’ Division of Boating and Waterways (DBW) to inform boaters to always remember to clean, drain, and dry their boats before entering and leaving lakes, rivers, and other waterways. DWR also works with partner agencies to routinely sample for adult and juvenile mussels at 18 SWP locations...*

...To prevent the spread of invasive mussels, watercraft must pass an entrance inspection before launching in most SWP reservoirs. If a watercraft fails an entrance inspection or has been in an infested waterbody, it must observe a seven to eight-day dry-out period before it can be launched in SWP waters. Dry time requirements vary for lakes managed by other entities, so it is best to check before you go.”

- DWR describes “prevention” as connection point monitoring/sampling and early detection response measures (Pretreatment) coupled with watercraft transport/inspection legislation (similar success with Quagga)
 - While pretreatment will help control mussel populations, effective mitigation and control measures can be implemented successfully at the connection points in the Main Basin while pretreatment options are still being implemented.
- **Containment** (including secondary backup containment)
 - **Desiccation** (when possible)
 - Requires complete drying of facility, ie. Spreading grounds and channels

PLAN COMPONENTS, cont'd

- **Physical/Mechanical Control Measures**
 - Operational parameters
 - Scraping and removal of any adult mussels
 - Habitat disruptive measures
- **Chemical Control Measures** (as needed)
 - Pre-treatment considerations – detailed explanation next slide
 - Post treatment chemical applications
- **Monitoring**
 - Pre and post delivery of State Water Project water
 - Visual Surveys and Inspections for juveniles and adults
 - Water sampling for veligers
- **Adaptive approach that will be adjusted as needed as data is collected**

Pre-Treatment Considerations

- **The pretreatment methods evaluated in this technical memorandum include:**
 - **Permitting (Chemical Injection Only)**
 - Point-source chemical injections are applied for and permitted under a Statewide Board Water Quality Order
 - Typically require descriptions of:
 - the chemical
 - treatment area
 - the species being treated for
 - any treatment by-products
 - application rate measurement methods
 - all control structures used to manage water influent and effluent treated flows
 - sampling plans, procedures and BMP's
 - **Chlorination/Chloramination**
 - Estimate 1-1.5 years temp install, 2-3 years permanent infrastructure
 - \$46 million capital/\$8 million annual operating expenses
 - **Ultraviolet Treatment** – not feasible for large-scale conveyance
 - Estimate 6 mos. To 1.5 years temp install, 1.5-3 years permanent
 - \$7-75 million capital (land requirements)/\$1.5-30 million annual operating expenses

Pre-Treatment Considerations, cont'd

- **Copper-Based Treatment or Other Molluscicide Application**
 - Estimate 6 mos. To 1.5 years temp install, 1.5-3 years permanent
 - \$1-12 million capital (land requirements)/\$1-6 million annual operating expenses
- **Filtration**
 - Filters are typically applicable for low flow rates when control is needed for short periods (1-14 days) due to the intensive operation and maintenance requirements
 - The capital cost, space requirements and operating costs for on site filtration have not been developed – but expected more costly than chlorination
- **Use of a drinking water treatment plant (MWD's Weymouth Treatment Plant)**
 - Requires expansion of existing treatment plant
 - Estimate 1-3 years to complete
 - \$50-150 million capital/\$25 million annual operating expenses

Questions?

Contact Kelly Gardner, Executive Officer – 626-815-1300